

C8051F970 DEVELOPMENT KIT USER'S GUIDE

1. Introduction

The C8051F970 Development Kit provides an evaluation and development platform for the C8051F97x MCUs. The board has a particular focus on capacitive sensing to highlight the 43 Capacitive Sense input channels available on the C8051F970 MCU.

1.1. Key Features

The key features of the C8051F970 Development Kit are:

- Silicon Labs EFM32 C8051F970 microcontroller with 32 kB flash and 8 kB RAM.
- Capacitive sensing 4 x 5 button matrix and slider highlight the unique Capacitive Sense module.
- Isolated power domains for the LEDs and the MCU to enable easy power measurement.
- Port headers for prototyping of custom hardware.

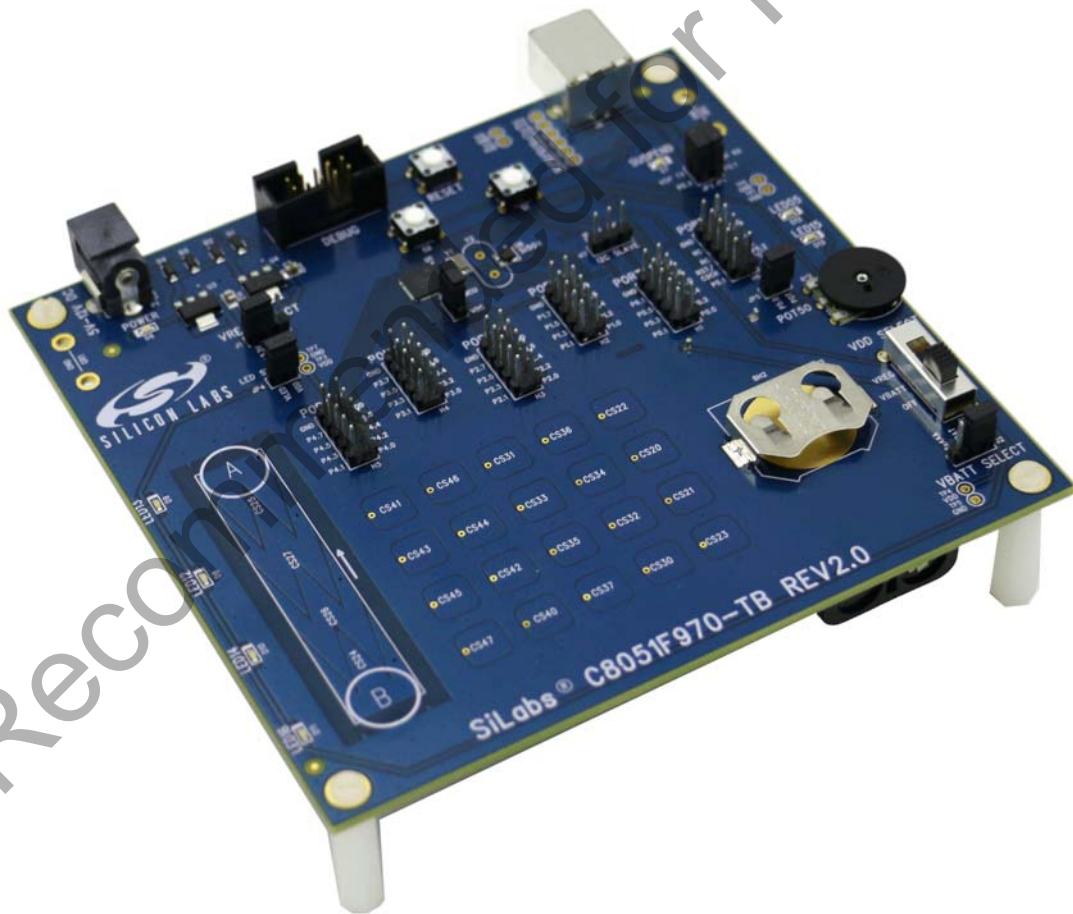


Figure 1. C8051F970 Target Board

C8051F970DK-UG

2. Relevant Documents

This document provides a hardware overview for the C8051F970 Target Board in the Development Kit. Additional information on Simplicity Studio, Capacitive Sense Profiler, and the Capacitive Sense firmware library can be found in the documents listed in this section.

2.1. Getting Started

For step-by-step information on getting started with the C8051F970 DK, see the C8051F970 Development Kit Quick Start Guide. This document can be accessed in Simplicity Studio by selecting or detecting a C8051F97x device and clicking the **Quick Start Guide** button.

2.2. Simplicity Studio

Simplicity Studio can be downloaded from www.silabs.com/simplicity-studio. More information on Simplicity Studio can be found in the included help (**Help**→**Help Contents** or **Help**→**Search**) or in the following document:

- **AN0822: *Simplicity Studio User's Guide*** — Contains basic information, tips, and tricks for using Simplicity Studio.

This document can be found at www.silabs.com/8bit-appnotes or using the **Application Notes** tile in Simplicity Studio.

2.3. Capacitive Sense

The Capacitive Sense Profiler and Capacitive Sense library are documented in:

- **AN0828: *Capacitive Sensing Library Overview*** — An overview of the capacitive sensing library, including basic tips and tricks on using the profiler tool.
- **AN0829: *Capacitive Sensing Library Configuration Guide*** — Describes how to configure the capacitive sensing library for different application requirements

These documents can be found at www.silabs.com/8bit-appnotes or using the **Application Notes** tile in Simplicity Studio.

2.4. Application Notes

All 8-bit Application Notes can be found at www.silabs.com/8bit-appnotes or using the **Application Notes** tile in Simplicity Studio.

3. Hardware Setup

Refer to Figure 2 for a diagram of the hardware configuration.

1. Connect the USB Debug Adapter to the 10-pin debug connector (**DEBUG**, H8) on the MCU card using the 10-pin ribbon cable.
2. Connect the USB Debug Adapter to a USB Port on the PC.
3. Ensure the **VDD Select** switch (SW1) is in the top VREG position.
4. Verify that the JP3 power measurement jumper is populated.
5. Power the board through the power connector (P1) using the supplied 9 V ac/dc adapter.

Notes:

- Use the **Reset** button in the IDE to reset the target when connected using a USB Debug Adapter.
- Remove power from the target board and the USB Debug Adapter before connecting or disconnecting the ribbon cable from the target board. Connecting or disconnecting the cable when the devices have power can damage the device and/or the USB Debug Adapter.

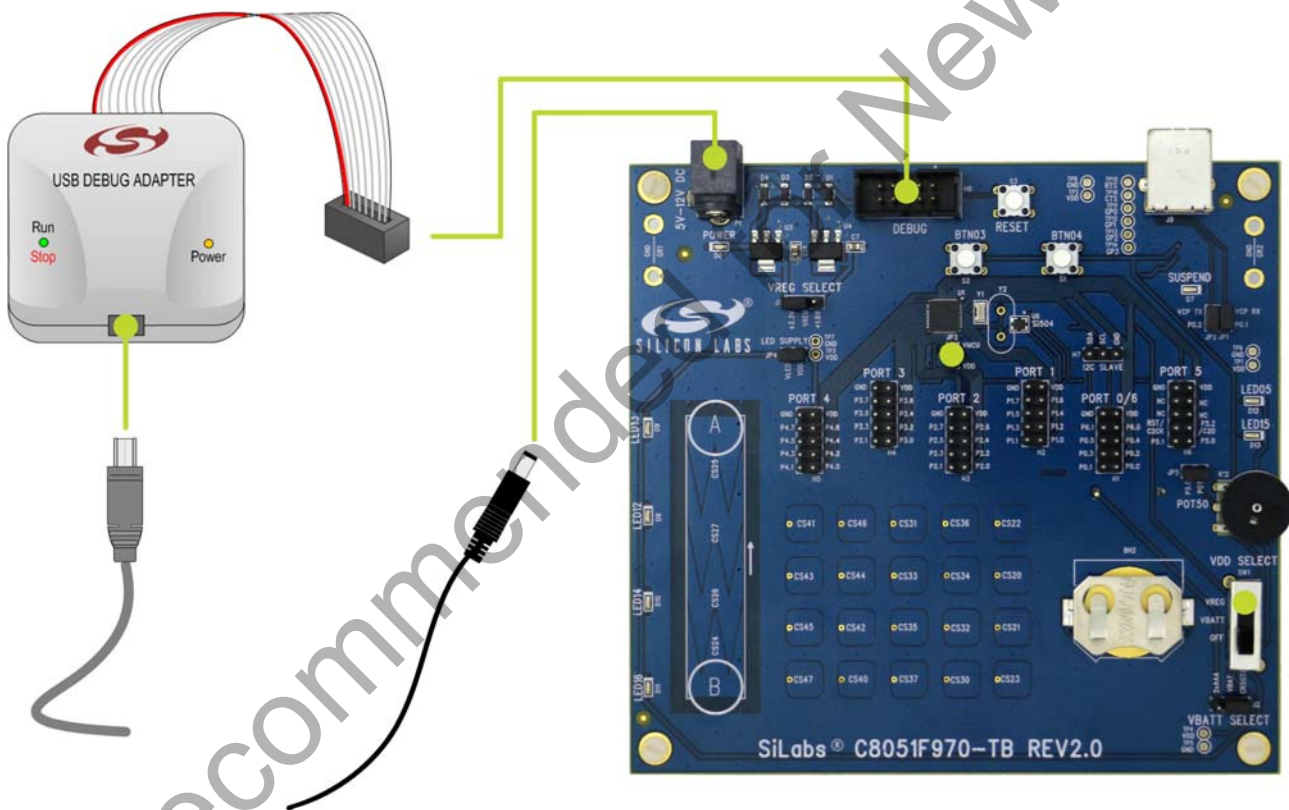


Figure 2. Hardware Setup

4. Software Setup

Simplicity Studio greatly reduces development time and complexity with Silicon Labs EFM32 and 8051 MCU products by providing a high-powered IDE, tools for hardware configuration, and links to helpful resources, all in one place.

Once Simplicity Studio is installed, the application itself can be used to install additional software and documentation components to aid in the development and evaluation process.

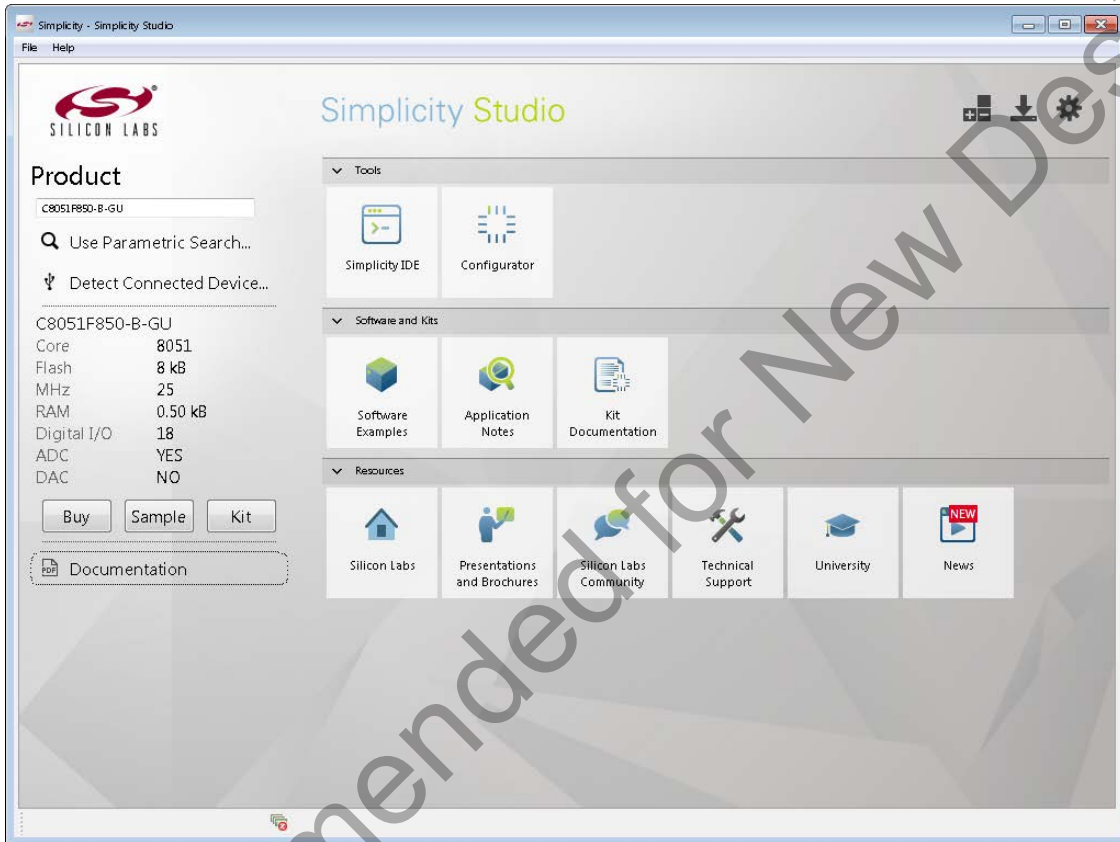


Figure 3. Simplicity Studio

The following Simplicity Studio components are required for the C8051F970 Development Kit:

- 8051 Products Part Support
- Simplicity Developer Platform

Download and install Simplicity Studio from www.silabs.com/8bit-software or www.silabs.com/simplicity-studio. Once installed, run Simplicity Studio by selecting **Start**→**Silicon Labs**→**Simplicity Studio**→**Simplicity Studio** from the start menu or clicking the **Simplicity Studio** shortcut on the desktop. Follow the instructions to install the software and click **Simplicity IDE** to launch the IDE.

The first time the project creation wizard runs, the **Setup Environment** wizard will guide the user through the process of configuring the build tools and SDK selection.

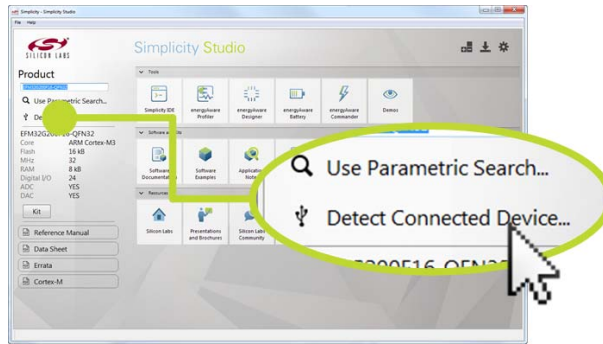
In the **Part Selection** step of the wizard, select from the list of installed parts only the parts to use during development. Choosing parts and families in this step affects the displayed or filtered parts in the later device selection menus. Choose the C8051F97x family by checking the **C8051F97x** check box. Modify the part selection at any time by accessing the **Part Management** dialog from the **Window**→**Preferences**→**Simplicity Studio**→**Part Management** menu item.

Simplicity Studio can detect if certain toolchains are not activated. If the **Licensing Helper** is displayed after completing the **Setup Environment** wizard, follow the instructions to activate the toolchain.

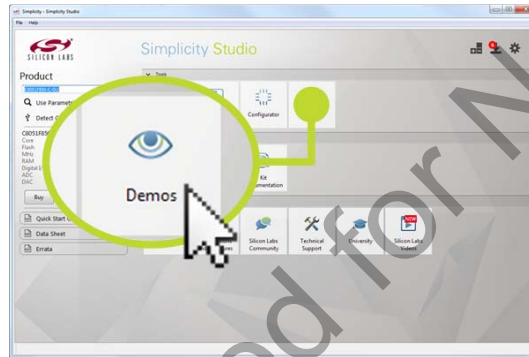
4.1. Loading a Demo

To download a demo to the board:

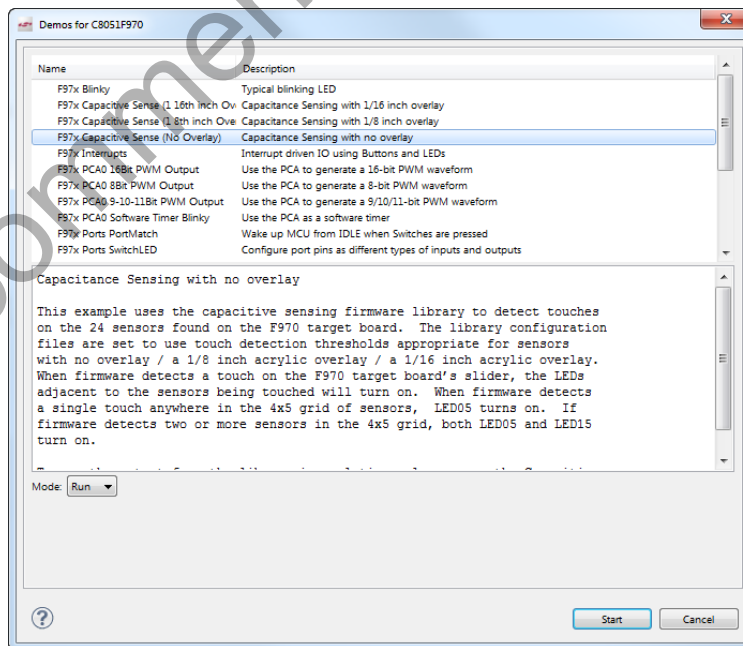
1. Click the **Detect Connected Device** button from the Simplicity Studio home screen.



2. Click the **Demos** tile from the Simplicity Studio home screen.



3. Select the desired demo from the list. For example, click the **Capacitive Sense (No Overlay)** demo for download to the board. A description of the demo and instructions are available in the lower area of the window.



4. Click the **Start** button. This will download the demo to the board and start it running.

4.2. Building the Blinky Example

Each project has its own source files, target configuration, SDK configuration, and build configurations such as the **Debug** and **Release** build configurations. The IDE can be used to manage multiple projects in a collection called a workspace. Workspace settings are applied globally to all projects within the workspace. This can include settings such as key bindings, window preferences, and code style and formatting options. Project actions, such as build and debug are context sensitive. For example, the user must select a project in the **Project Explorer** view in order to build that project.

To create a project based on the Blinky example:

1. Click the **Software Examples** tile from the Simplicity Studio home screen.
2. In the **Kit** drop-down, select **C8051F970 Development Kit**, in the **Part** drop-down, select **C8051F970**, and in the **SDK** drop-down, select the desired SDK. Click **Next**.
3. Select **Example** and click **Next**.
4. Under **C8051F970 Development Kit** in the **Blinky** folder, select **F97x Blinky** and click **Finish**.
5. Click on the project in the **Project Explorer** and click **Build**, the hammer icon in the top bar. Alternatively, go to **Project**→**Build Project**.
6. Click **Debug** to download the project to the hardware and start a debug session.
7. Press the **Resume** button to start the code running. The LED should blink.



8. Press the **Suspend** button to stop the code.



9. Press the **Reset the device** button to reset the target MCU.



10. Press the **Disconnect** button to return to the development perspective.



4.3. Simplicity Studio Help

Simplicity Studio includes detailed help information and device documentation within the tool. The help contains descriptions for each dialog window. To view the documentation for a dialog, click the question mark icon in the window:



This will open a pane specific to the dialog with additional details.

The documentation within the tool can also be viewed by going to **Help**→**Help Contents** or **Help**→**Search**.

4.4. CP210x USB to UART VCP Driver Installation

The target board includes a Silicon Labs CP210x USB-to-UART Bridge Controller. Device drivers for the CP210x need to be installed before the PC software can communicate with the MCU through the UART interface. Download the latest drivers from the website (www.silabs.com/vcpdrivers).

1. Download the drivers from the website and unzip the files to a location and run the appropriate installer for the system (x86 or x64).
2. Accept the license agreement and follow the steps to install the driver on the system. The installer will let you know when your system is up to date. The driver files included in this installation have been certified by Microsoft.
3. To complete the installation process, connect the included USB cable between the host computer and the USB connector (J9) on the target board. Windows will automatically finish the driver installation. Information windows will pop up from the taskbar to show the installation progress.
 - If needed, the driver files can be uninstalled by selecting **Windows Driver Package—Silicon Laboratories...** option in the **Programs and Features** window.

C8051F970DK-UG

5. C8051F970 Target Board Overview

The C8051F970 target board enables application development on the C8051F97x MCU device family. Figure 4 and Figure 5 highlight the C8051F970 target board features.

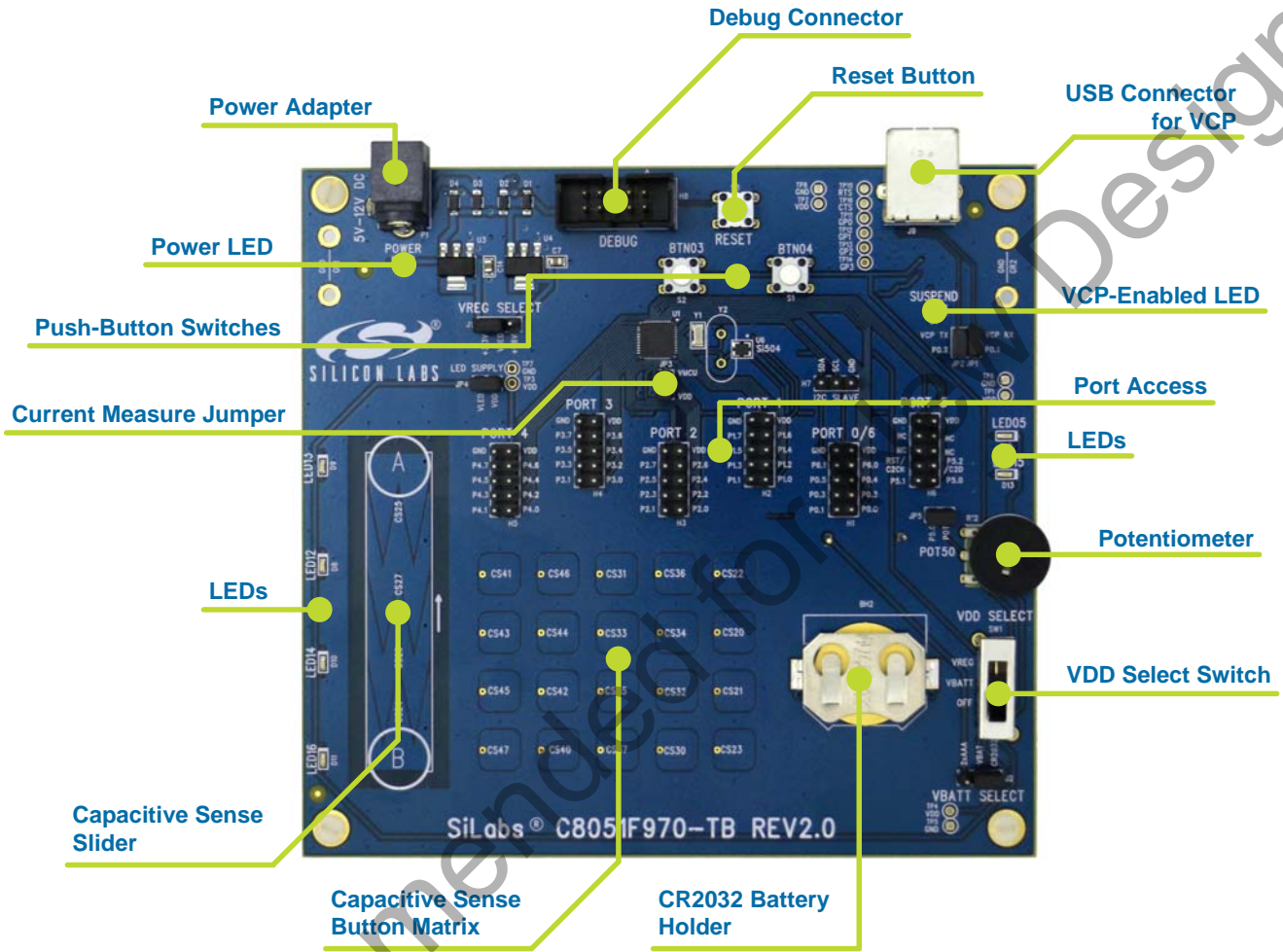


Figure 4. C8051F970 Target Board Features—Front

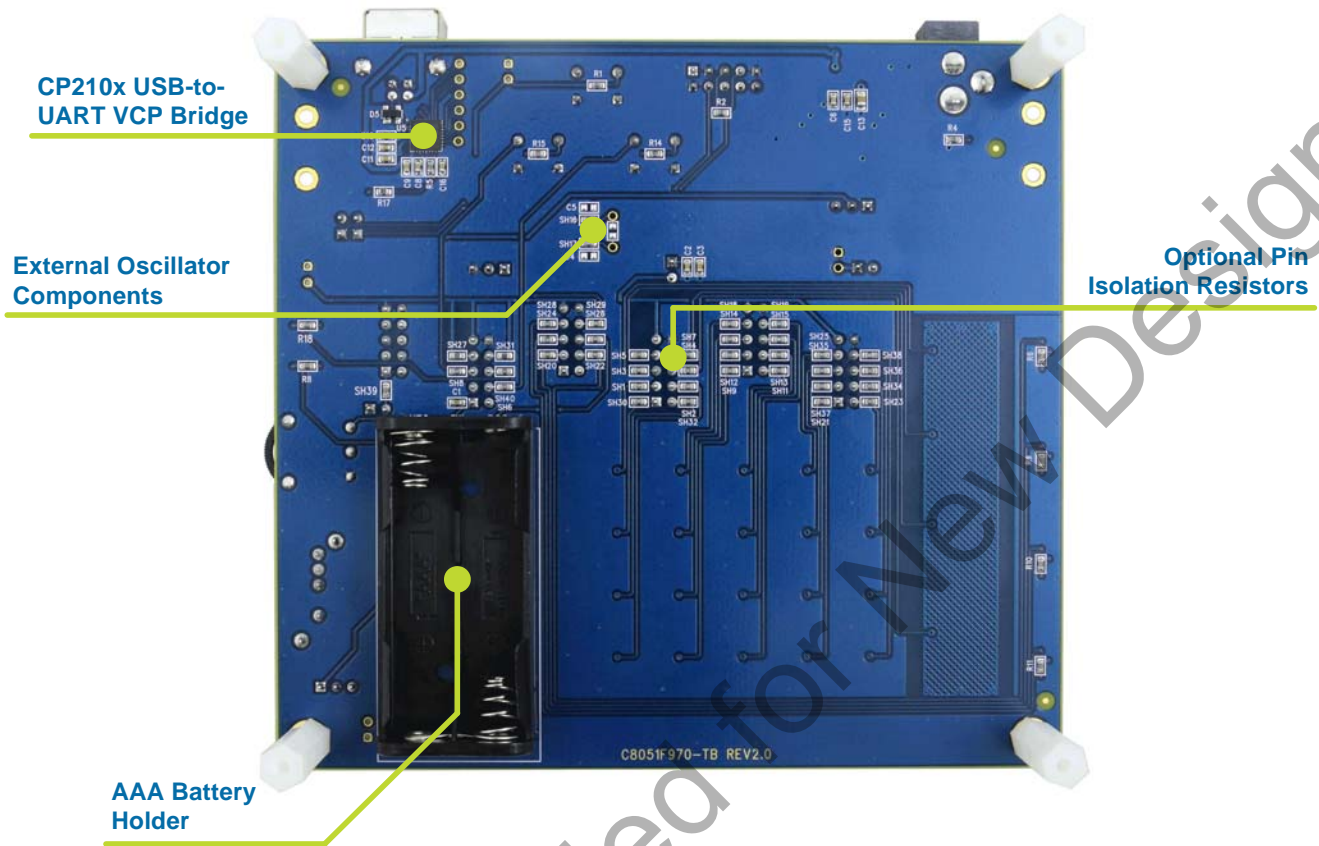


Figure 5. C8051F970 Target Board Features—Back

5.1. Push-Button Switches and LEDs (S1-2, DS8-13)

The C8051F970 target board has two push-button switches and six LEDs. The switches are normally open and pull the pin voltage to ground when pressed. The LEDs connect to VDD through a current-limiting resistor and turn on when the corresponding port pin is low.

Each pin has a zero ohm resistor that can be used to disconnect the switches and LEDs from the GPIO pins.

Table 1. Switch and LED Pin Descriptions

| MCU Pin | Function |
|---------|----------------------|
| P1.2 | Red LED DS8 (LED12) |
| P1.3 | Red LED DS9 (LED13) |
| P1.4 | Red LED DS10 (LED14) |
| P1.6 | Red LED DS11 (LED16) |
| P0.5 | Red LED DS12 (LED05) |
| P1.5 | Red LED DS13 (LED15) |
| P0.4 | Switch S1 (BTN04) |
| P0.3 | Switch S2 (BTN03) |

5.2. Potentiometer (R12)

The potentiometer is available on P5.0. To use the potentiometer, install a shorting block on JP5 to connect P5.0 to the potentiometer.

The potentiometer is referenced to P0.0, which is the voltage reference pin. Since the voltage reference can only source ~250 μ A, the simplest way to use the potentiometer is to turn on the P0.0 driver and set it to a logic high using the port registers. The most accurate way to use the potentiometer is to externally connect P0.0 to VDD.

5.3. Capacitive Sense Buttons (CS20-27, CS30-37, CS40-47)

The capacitive sensing buttons demonstrate the C8051F970 Capacitive Sense module for use with buttons and sliders. More information on the capacitive sense library can be found in 2.3. "Capacitive Sense," on page 2.

5.4. Power (SW1, J1, and J2)

The VDD power supply has three power options: on-board +3.3 V or +1.8 V regulator power, battery power, or off. The **VDD Select** switch (SW1) is used to select between the two options.

The +3.3 V or +1.8 V regulator power option is the upper **VREG** position and allows the board to be powered from a diode-OR of three power sources: 9 V Power Adapter (P1), the USB connector (J9), or the USB Debug Adapter (H8). Once the **VDD Select** switch is in the **VREG** position, the VREG Select header (J1) selects between +3.3 V or +1.8 V.

The middle **VBATT** option allows the board to be powered from either two AAA batteries (BH1) or a CR2032 coin cell (BH2). When the **VDD Select** switch is in the **VBATT** position, J2 selects between a CR2032 or two AAA batteries

The bottom **OFF** option disconnects the board power.

5.5. Power LED (D6)

The blue power LED provides visual feedback when the board is powered through USB, the 9 V power adapter, or the USB Debug Adapter. This LED is not tied to the battery power net to conserve energy. The power LED indicates that power is available on the board and the VDD Power Select switch must be configured properly to power the MCU.

5.6. Power Measurement Jumper (JP3)

The power measurement jumper (JP3) allows for easy access to measure the VDD current of the MCU. The shorting block for this header is populated by default. The side labeled VMCU is the side isolated to the C8051F970 MCU. To measure the supply current, remove the corresponding shorting block and connect a current measurement device across the unpopulated header.

The voltage supply prior to the jumper is the VDD net, which supplies all of the external LEDs, switches, USB COM, and reset pull-up. The VDD_MCU net after the jumper only connects to the MCU.

5.7. Debug Header (H8)

The shrouded 10-pin debug header supports the Silicon Labs USB Debug Adapter. This connector provides a C2 debug connection to the C8051F970 on the target board.

5.8. Reset Button (S3)

The reset push-button switch is to the right of the debug header (H8). Pushing this button will always reset the MCU. Note that pushing this button while the IDE is connected to the MCU will result in the IDE disconnecting from the target.

5.9. LED Supply (JP4)

The LED supply separates the LED power from the rest of the board. Disabling the LEDs removes their power consumption without having to modify firmware.

5.10. I2C Slave (H7)

The I2C Slave header provides ground, SDA, and SCL to enable connection to another board with an I2C master. A 4.7 kΩ pull-up is populated by default on both SDA and SCL.

5.11. External Clocks (U6, Y1, Y2)

The C8051F970 target board is equipped with a Silicon Labs Si504 programmable CMEMS oscillator and two crystal footprints Y1 and Y2. Y1 is a 25 MHz crystal that is populated by default. More information on the Si504 can be found on the Silicon Labs CMEMS website: www.silabs.com/cmems.

5.12. UART Connection Options (JP1-2, U5)

The target board features a USB virtual COM port (VCP) UART connection via the standard USB connector (J9). The VCP connection uses the CP210x USB-to-UART bridge chip (U5). The GPIO pins connected to the CP210x device can be enabled or disabled through the JP1 and JP2 headers. Table 2 shows the GPIO pins that are routed to the CP210x.

Table 2. CP210x Controlled GPIO Pins

| MCU Pin | COM Function |
|---------|---------------|
| P0.1 | UART Transmit |
| P0.2 | UART Receive |

5.13. Port Pin Headers (H1-6)

All of the MCU port pins are available on the 0.100-inch headers on target board. Each connector provides connections to each port, VDD, and ground. Any unused pins on the **Port 5** header are not connected. Some of these port pins are shared with other functions on the board and may be modified as explained in Section 5.14.

C8051F970DK-UG

5.14. MCU Port Pin Connections

Table 3 summarizes all functions connected to each pin on the C8051F970 MCU in the target board.

Table 3. MCU Pin Functions

| MCU Pin | Signal | |
|---------|-----------------------------|-----------------|
| P0.0 | VREF | Port Pin Header |
| P0.1 | VCP_RX | Port Pin Header |
| P0.2 | VCP_TX | Port Pin Header |
| P0.3 | S1 switch | Port Pin Header |
| P0.4 | S2 switch | Port Pin Header |
| P0.5 | LED05 | Port Pin Header |
| P0.6 | RTC crystal | |
| P0.7 | RTC crystal | |
| P1.0 | External Oscillator (XTAL1) | Port Pin Header |
| P1.1 | External Oscillator (XTAL2) | Port Pin Header |
| P1.2 | LED12 | Port Pin Header |
| P1.3 | LED13 | Port Pin Header |
| P1.4 | LED14 | Port Pin Header |
| P1.5 | LED15 | Port Pin Header |
| P1.6 | LED16 | Port Pin Header |
| P1.7 | Si504 programming pin | Port Pin Header |
| P2.0 | CS button | Port Pin Header |
| P2.1 | CS button | Port Pin Header |
| P2.2 | CS button | Port Pin Header |
| P2.3 | CS button | Port Pin Header |
| P2.4 | CS slider | Port Pin Header |
| P2.5 | CS slider | Port Pin Header |
| P2.6 | CS slider | Port Pin Header |

| MCU Pin | Signal | |
|---------|---------------|-----------------|
| P2.7 | CS slider | Port Pin Header |
| P3.0 | CS button | Port Pin Header |
| P3.1 | CS button | Port Pin Header |
| P3.2 | CS button | Port Pin Header |
| P3.3 | CS button | Port Pin Header |
| P3.4 | CS button | Port Pin Header |
| P3.5 | CS button | Port Pin Header |
| P3.6 | CS button | Port Pin Header |
| P3.7 | CS button | Port Pin Header |
| P4.0 | CS button | Port Pin Header |
| P4.1 | CS button | Port Pin Header |
| P4.2 | CS button | Port Pin Header |
| P4.3 | CS button | Port Pin Header |
| P4.4 | CS button | Port Pin Header |
| P4.5 | CS button | Port Pin Header |
| P4.6 | CS button | Port Pin Header |
| P4.7 | CS button | Port Pin Header |
| P5.0 | Potentiometer | Port Pin Header |
| P5.1 | | Port Pin Header |
| P5.2 | C2D | Port Pin Header |
| P6.0 | I2C Slave SCL | Port Pin Header |
| P6.1 | I2C Slave SDA | Port Pin Header |
| | | |

5.15. Shorting Blocks: Factory Defaults

The C8051F970 target board comes from the factory with pre-installed shorting blocks on several headers. Figure 6 shows the positions of the factory default shorting blocks.

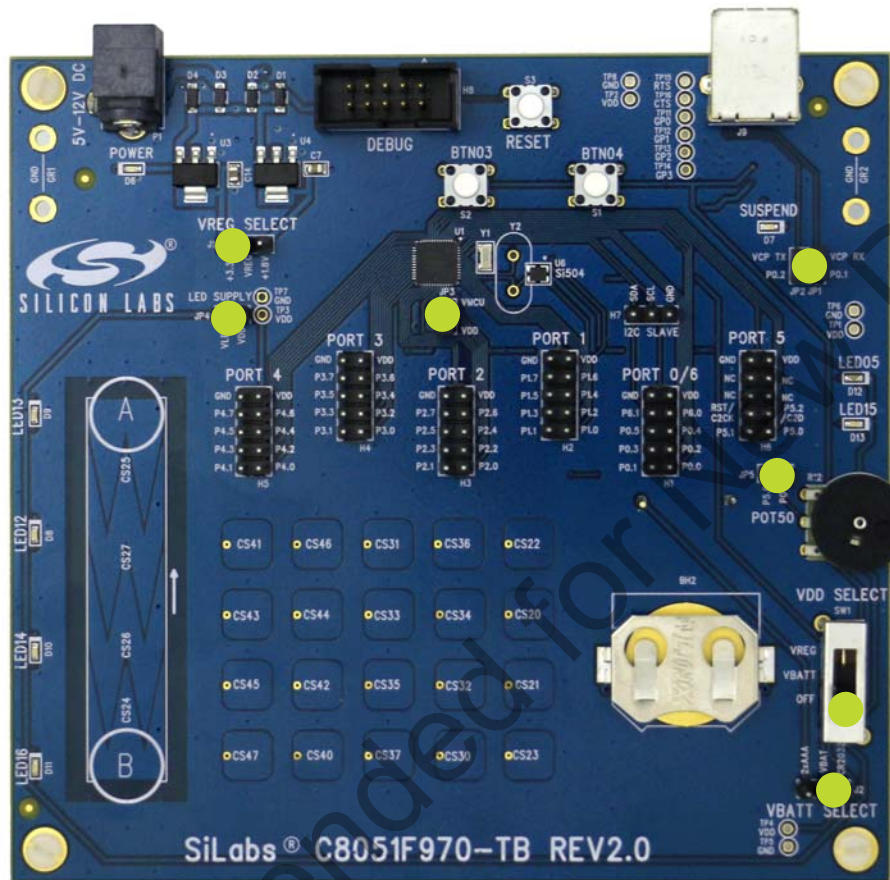


Figure 6. Shorting Blocks: Factory Defaults

By default, a shorting block is installed in the following locations:

- J1 (**VREG Select**): +3.3V connected to **VREG**
- J2 (**VBAT Select**): **CR2032** connected to **VBATT**
- JP1: P0.1 connected to **VCP_RX**
- JP2: P0.2 connected to **VCP_TX**
- JP3: VDD connected to **VDD_MCU**
- JP4: VDD connected to **VDD_LED**
- JP5: P5.0 connected to Potentiometer

In addition, the **VDD Select** switch is in the **OFF** position by default.

C8051F970DK-UG

6. Power Measurement

The C8051F970 MCU card includes a power measurement header JP3 for MCU power measurement purposes. The VDD_MCU supply on top of the header connects only to the MCU on the board. The VDD supply on the bottom of the JP3 header powers the external LEDs, switches, reset switch, potentiometer, and VCP COM port.

6.1. Measuring Power with Fixed VDD

To measure the power of the C8051F970 MCU using the target board at a fixed 3.3 V or 1.8 V:

1. Connect a USB Debug Adapter to the 10-pin shrouded debug connector (H8).
2. Remove the shorting blocks from the COM port pins (JP1 and JP2) and the potentiometer (JP5).
3. Remove the JP3 power measurement shorting block.
4. Connect a multimeter across (positive side on the bottom pin) the JP3 header.
5. Move the J1 shorting block to either the **+3.3V-VREG** or the **VREG+1.8V** position.
6. Move the **VDD Select** switch (SW1) to the upper **VREG** position.
7. Connect the 9 V power adapter to **POWER** (P1).
8. Download the code to the board.
9. Measure the power of the device.

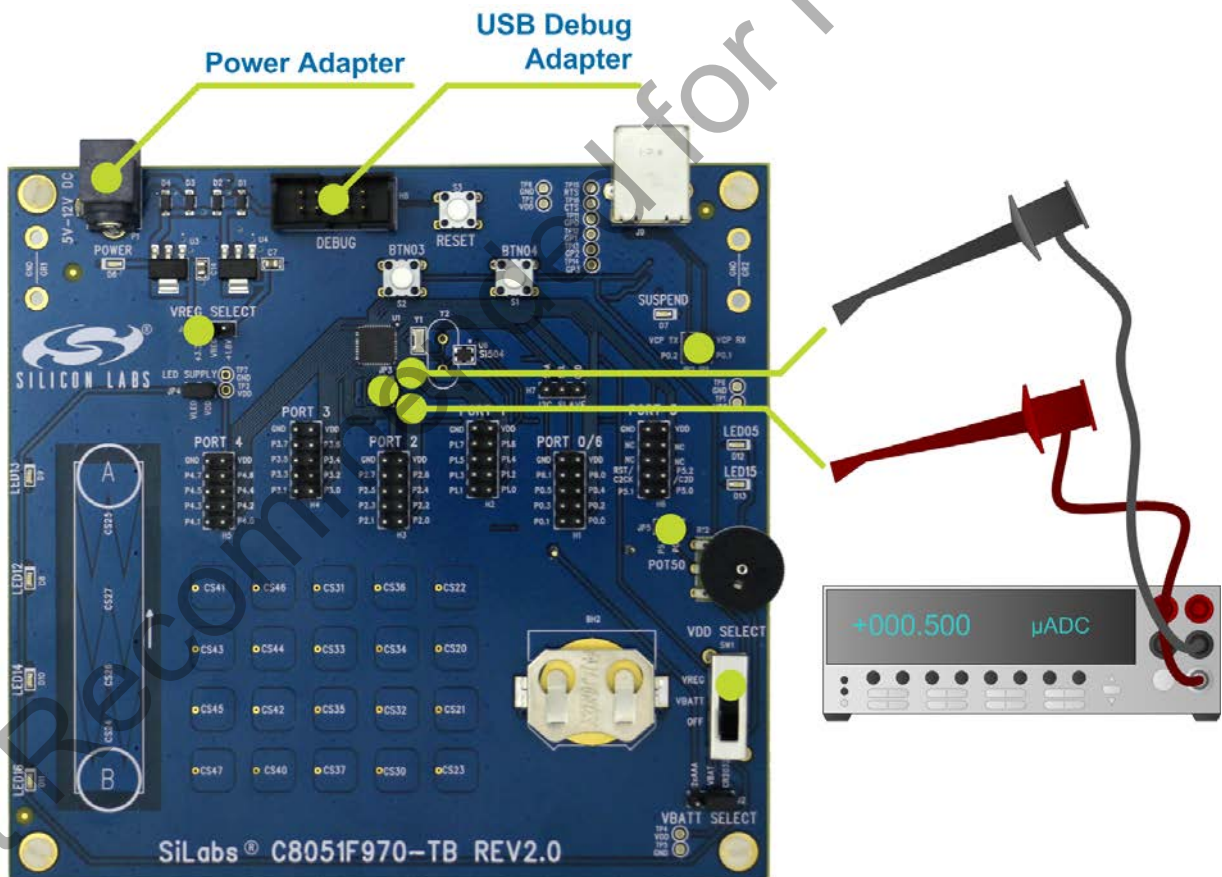


Figure 7. C8051F970 Power Measurement Configuration— Fixed VDD

6.2. Measuring Power with Varying VDD

To measure power with a varying VDD:

1. Connect a USB Debug Adapter to the 10-pin shrouded debug connector (H8).
2. Remove the shorting blocks from the COM port pins (JP1 and JP2) and the potentiometer (JP5).
3. Remove the JP3 power measurement shorting block.
4. Connect a multimeter across (positive side on the bottom pin) the JP3 header.
5. Remove the J1 shorting block.
6. Move the **VDD Select** switch (SW1) to the upper **VREG** position.
7. Connect a power supply to **VREG** on the J1 header (middle).
8. Download the code to the board.
9. Measure the power of the device.

Note: The pull-up resistor on /RST is powered by the VDD net, which is separated from the VDD_MCU net with the power measurement shorting block (JP3) removed. Powering the MCU using VDD_MCU without powering the VDD net may prevent Simplicity Studio from communicating with the MCU.

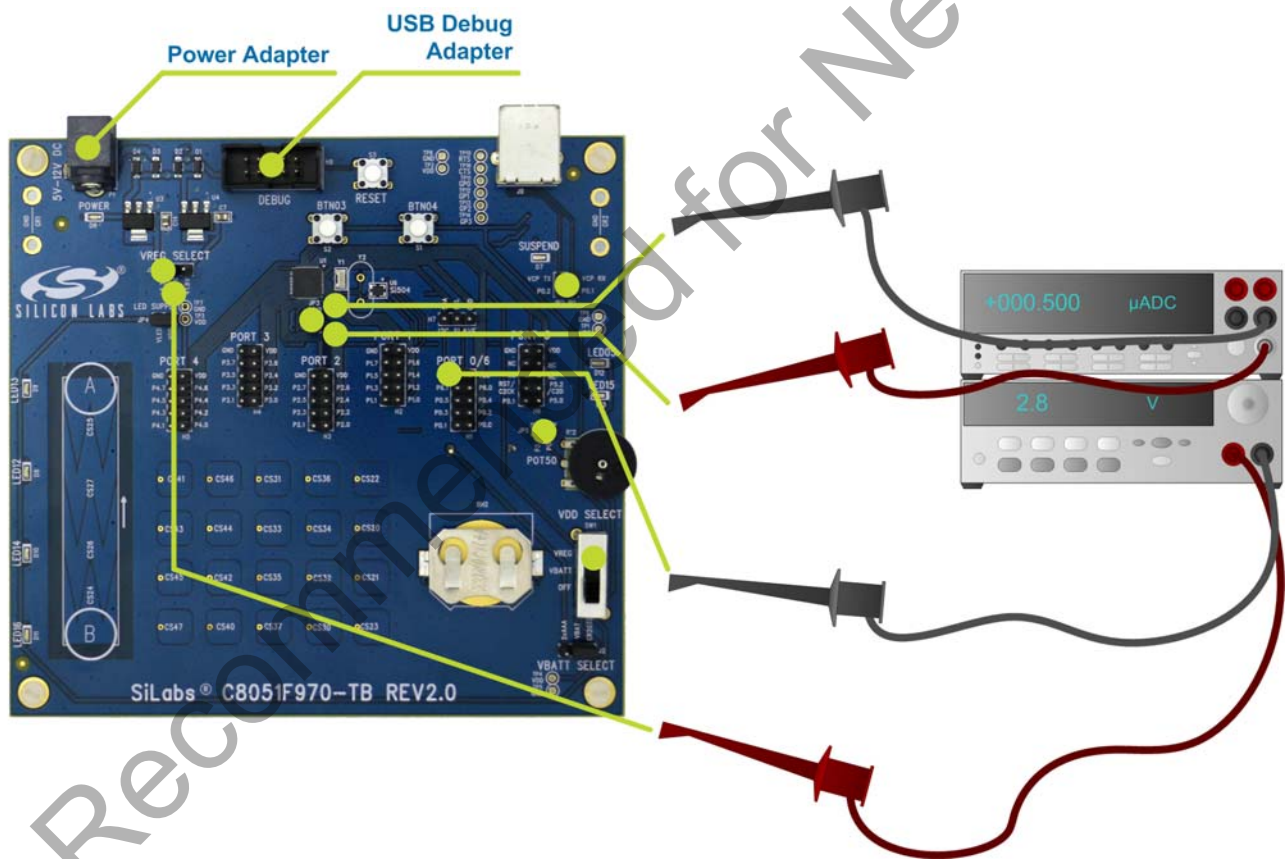


Figure 8. C8051F970 Power Measurement Configuration—Varying VDD

7. Known Board Issues

There are no known issues with Revision 2.0 of the C8051F970 target board.

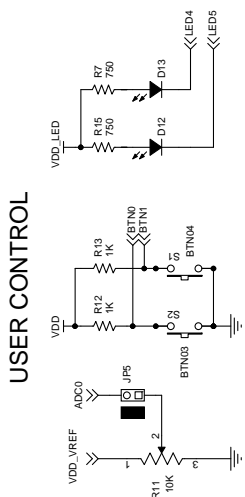
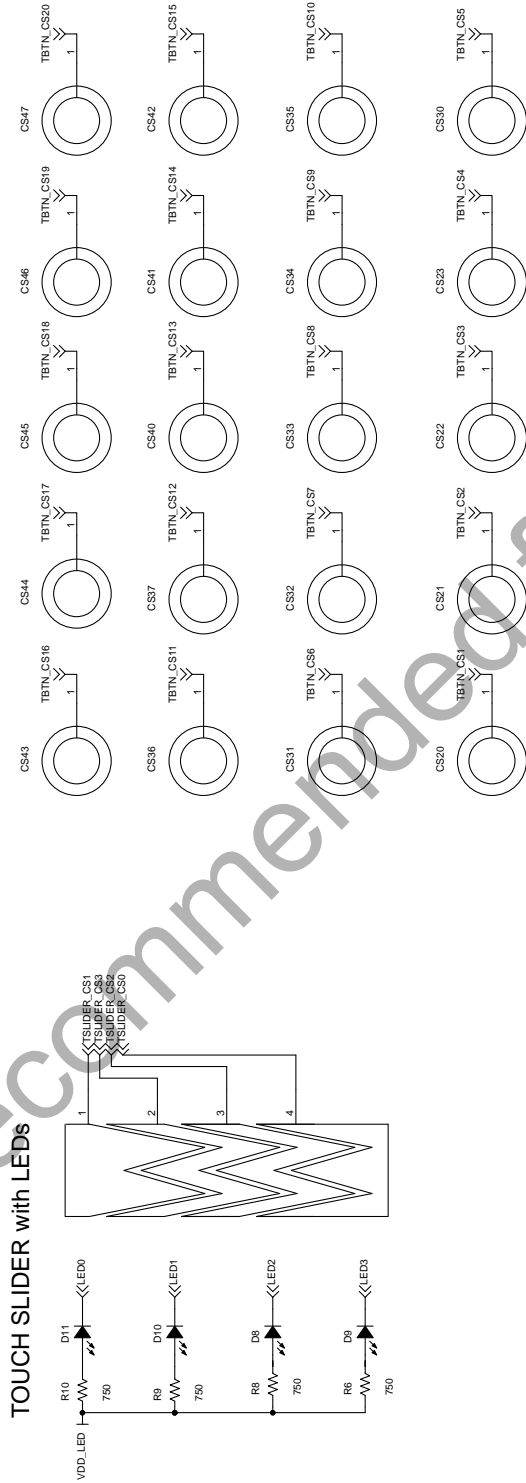


Figure 11. C8051F970 Target Board Schematic (Revision 2.0) (3 of 3)

9. Bill of Materials

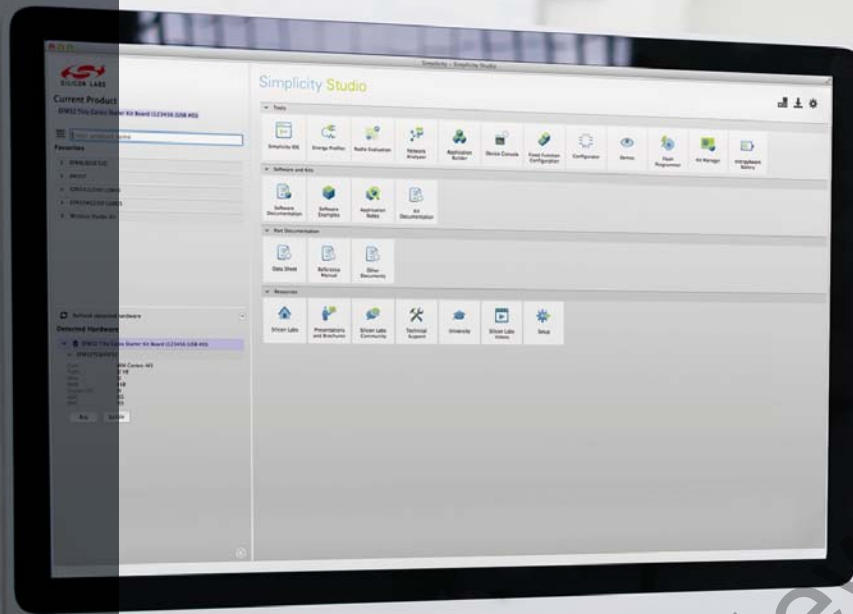
Table 4. C8051F970 Target Board Bill of Materials

| Reference | Part Number | Source | Description |
|---|--------------------------|--------------------------|---|
| BH1 | 2468 | Keystone Electronics | 2 cell AAA |
| BH2 | BAT-HLD-001 | Linx Technologies Inc. | 20 mm CR2032 battery holder |
| C1 | C0603X5R6R3-475K | Venkel | 4.7 μ F, 6.3 V \pm 10% 0603 |
| C2, C6, C8, C12, C15, C16 | C0603X7R100-104K | Venkel | 0.1 μ F, 10 V \pm 10% 0603 |
| C3, C9, C10, C11 | C0603X7R100-105K | Venkel | 1 μ F, 10 V \pm 10% 0603 |
| C7, C13, C14 | C0805X5R160-106K | Venkel | 10 μ F, 16 V \pm 10% 0805 |
| D1, D2, D3 | STPS140Z | ST Semiconductor | STPS140Z 1.0A 40V SOD-123 |
| D4 | MMSZ5245BT1 | On Semi | 15V 500mW 15V 5% SOD-123 |
| D5 | SP0503BAHTG | Littlefuse | USB ESD diodes 300mW 20V SOT143 |
| D6, D7 | LTST-C190TBKT | Lite-On Technology Corp. | Blue LED 0603 |
| D8, D9, D10, D11, D12, D13 | SML-LX0603IW | Lumex Inc. | Red 30 mA 0603 |
| H1, H2, H3, H4, H5, H6 | TSW-105-07-T-D | Samtec | 5x2 header |
| H7, J1, J2 | TSW-103-07-L-S | Samtec | 1x3 header |
| H8 | 5103309-1 | Tyco | 5x2 Shrouded Header |
| HW1, HW2, HW3, HW4 | 1902D | Keystone Electronics | standoff |
| HW5, HW6, HW7, HW8 | NSS-4-4-01 | Richco Plastic Co | 4-40 screws |
| J3 | 614 004 161 21 | WURTH | USB TYPE B |
| JP1, JP2, JP3, JP4, JP5 | TSW-102-07-T-S | Samtec | 1x2 jumper |
| JS1, JS2, JS3, JS4, JS5, JS6, JS7 | SNT-100-BK-T | Samtec | Jumper Shunt |
| P1 | RAPC722X | Switchcraft Inc. | Power Jack 5A |
| R1, R4, R5, R12, R13, R14 | CR0603-10W-1001F | Venkel | 1 k Ω , 1/10 W \pm 1% 0603 |
| R11 | RV100F-30-4K1B-B10K-B301 | Alpha (Taiwan) | 10 k Ω , 0.03 W 30% 10 mm thumbwheel potentiometer |
| R16, R17 | CR0603-10W-472J | Venkel | 4.7 k Ω , 1/10W \pm 5% 0603 |

C8051F970DK-UG

Table 4. C8051F970 Target Board Bill of Materials (Continued)

| Reference | Part Number | Source | Description |
|---|-------------------|---------------------|---|
| R2, SH1, SH2, SH3, SH4, SH5, SH6, SH7, SH8, SH9, SH11, SH12, SH13, SH14, SH15, SH16, SH17, SH18, SH19, SH20, SH21, SH22, SH23, SH24, SH25, SH26, SH28, SH29, SH30, SH32, SH34, SH35, SH36, SH37, SH28, SH29, SH30, SH32, SH34, SH35, SH36, SH37, SH38, SH39, SH40 | CR0603-16W-000 | Venkel | 0 Ω , 1A 0603 |
| R6, R7, R8, R9, R10, R15 | CR0603-16W-7500F | Venkel | 750 Ω , 1/10 W \pm 1% 0603 |
| S1, S2, S3 | EVQ-PAD04M | PANASONIC CORP | momentary switch |
| SW1 | OS103012MU1QP1 | C&K | 3 position slide switch |
| U1 | C8051F970-GM | Silicon Labs | C8051F970 QFN48 |
| U2 | 504PCAA001033DAG | Silicon Labs | Programmable CMEMS Oscillator |
| U3 | LD1117AS33TR | ST Semiconductor | 3.3 V LDO SOT223 |
| U4 | LD1117AS18TR | ST Semiconductor | 1.8 V 1A SOT223 |
| U5 | CP2103-GM | Silicon Labs | CP2103 USB to UART bridge (QFN28) |
| Y1 | ABS07-32.768KHZ-7 | Abracon Corporation | 32.768 kHz crystal |
| Components Not Installed | | | |
| C4, C5 | C0603C0G500-20K | Venkel | 20 pF, 50 V \pm 10% 0603 (NI) |
| R3 | CR0603-16W-1005F | Venkel | 10 M Ω 1/16 W \pm 1% 0603 (NI) |
| TP1, TP2, TP3, TP4, TP5, TP6, TP7, TP8, TP9, TP10, TP11, TP12, TP13, TP14 | 151-205-RC | Kobiconn | Testpoint (NI) |
| Y2 | ECS-250-18-4X-F | ECS | 25 MHz HC-49/US (NI) |



Simplicity Studio

One-click access to MCU and wireless tools, documentation, software, source code libraries & more. Available for Windows, Mac and Linux!



IoT Portfolio
www.silabs.com/IoT



SW/HW
www.silabs.com/simplicity



Quality
www.silabs.com/quality



Support and Community
community.silabs.com

Disclaimer

Silicon Laboratories intends to provide customers with the latest, accurate, and in-depth documentation of all peripherals and modules available for system and software implementers using or intending to use the Silicon Laboratories products. Characterization data, available modules and peripherals, memory sizes and memory addresses refer to each specific device, and "Typical" parameters provided can and do vary in different applications. Application examples described herein are for illustrative purposes only. Silicon Laboratories reserves the right to make changes without further notice and limitation to product information, specifications, and descriptions herein, and does not give warranties as to the accuracy or completeness of the included information. Silicon Laboratories shall have no liability for the consequences of use of the information supplied herein. This document does not imply or express copyright licenses granted hereunder to design or fabricate any integrated circuits. The products must not be used within any Life Support System without the specific written consent of Silicon Laboratories. A "Life Support System" is any product or system intended to support or sustain life and/or health, which, if it fails, can be reasonably expected to result in significant personal injury or death. Silicon Laboratories products are generally not intended for military applications. Silicon Laboratories products shall under no circumstances be used in weapons of mass destruction including (but not limited to) nuclear, biological or chemical weapons, or missiles capable of delivering such weapons.

Trademark Information

Silicon Laboratories Inc., Silicon Laboratories, Silicon Labs, SiLabs and the Silicon Labs logo, CMEMS®, EFM, EFM32, EFR, Energy Micro, Energy Micro logo and combinations thereof, "the world's most energy friendly microcontrollers", Ember®, EZLink®, EZMac®, EZRadio®, EZRadioPRO®, DSPLL®, ISOmodem®, Precision32®, ProSLIC®, SiPHY®, USBXpress® and others are trademarks or registered trademarks of Silicon Laboratories Inc. ARM, CORTEX, Cortex-M3 and THUMB are trademarks or registered trademarks of ARM Holdings. Keil is a registered trademark of ARM Limited. All other products or brand names mentioned herein are trademarks of their respective holders.



SILICON LABS

Silicon Laboratories Inc.
400 West Cesar Chavez
Austin, TX 78701
USA

<http://www.silabs.com>